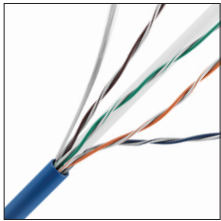


CAT6 RISER CABLE

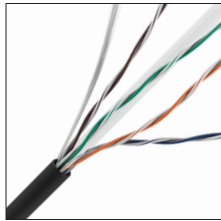
23/4 CMR/FT4 EXPRESS BOX



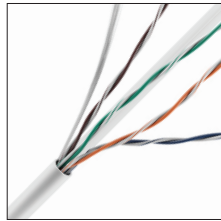
SPEC SHEET



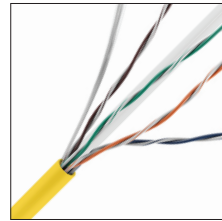
0E-CMR6BLR



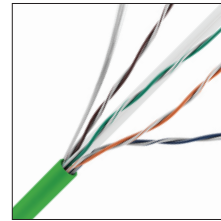
0E-CMR6BKR



0E-CMR6WHR



0E-CMR6YWR



0E-CMR6GNR

Physical Characteristics

Conductor : 23 AWG Solid Bare Annealed Copper

Insulation : HDPE (High Density Polyethylene)

Conductor Color Code:

- Pair 1 : Blue - White/Blue, • Pair 2 : Orange - White/Orange
- Pair 3 : Green - White/Green • Pair 4 : Brown - White/Brown

Spline : FR Polyolefin

Rip Cord : Applied longitudinally under jacket

Jacket : PVC (Flame-Retardant, SUN RES & RoHS compliant)

Jacket Legend :

- 0000FT CAT 6 4 PR 23 AWG E507576 (UL) CMR c(UL)us FT4 SUN RES 75C (RoHS)
UL VERIFIED TO TIA-568.2-D CAT 6 ##### RM# A B C D E F 1 2 3 4 5 6 7 8 9

Nominal Cable Diameter (in) : 0.232

Nominal Cable Net Weight (lbs/1000ft) : 27.10

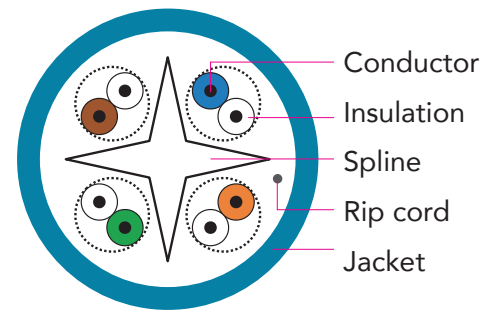
Minimum Bend Radius (in) : 1.0

Maximum Pulling Force (lbs) : 25

Temperature Rating (°F) :

- Installation: +32 to + 140 • Storage & Operation : -4 to + 167

Operating Voltage : 300V



Applications

IEEE802.3: 1000BASE-T, 100 BASE-TX, 10 BASE-T, ANSI/TIA/EIA 854: 1000BASE-TX, 155Mp/s, 1.2 Gb/s ATM, ANSI X3.263: 100Mb/s, IEEE 802.3af DTE Power (PoE), Digital Video



For more information contact your ADI Sales person or visit adiglobal.com/adiexclusivebrands

CAT6 RISER CABLE

23/4 CMR/FT4 EXPRESS BOX



Standard Compliance

- ANSI/TIA-568.2-D
- ANSI/TIA-862 (Building Automation)
- IEC 11801 Ed.2.0 (Class E)
- ICEA S-102-700 (Category 6)
- NEC/CEC Type CMR (UL 1666) for Riser
- UL 444
- RoHS Compliant Directive 2011/65/EU

Certifications



Certifications for Management System

ISO9001: 2008, ISO14001: 2004, OHSAS 18001

Electrical Characteristics

| Max. Capacitance (nF/100m @ 1 kHz) | Max. DC Resistance (Ω/100m @ 68°F) | Dielectric Strength (DC-kV, 2s) | Characteristic Impedance (Ω 1~100 MHz) |
|---------------------------------------|---------------------------------------|------------------------------------|---|
| 5.6 | 9.38 | 2.5 | 100 ± 15 |

| Frequency MHz | Insertion Loss dB/100m (Max.) | NEXT dB/100m (Min.) | PSNEXT dB/100m (Min.) | ACRF dB/100m (Min.) | PSACRF dB/100m (Min.) | Return Loss dB/100m (Min.) | PD ns/100m (Max.) | PD Skew ns/100m (Max.) |
|------------------|-------------------------------------|---------------------------|-----------------------------|---------------------------|-----------------------------|----------------------------------|-------------------------|------------------------------|
| 1 | 2.0 | 74.3 | 72.3 | 67.8 | 64.8 | 20.0 | 570 | 45 |
| 4 | 3.8 | 65.3 | 63.3 | 55.8 | 52.8 | 23.0 | 552 | 45 |
| 10 | 6.0 | 59.3 | 57.3 | 47.8 | 44.8 | 25.0 | 545 | 45 |
| 16 | 7.6 | 56.2 | 54.2 | 43.7 | 40.7 | 25.0 | 543 | 45 |
| 20 | 8.5 | 54.8 | 52.8 | 41.8 | 38.8 | 25.0 | 542 | 45 |
| 31.25 | 10.7 | 51.9 | 49.9 | 37.9 | 34.9 | 23.6 | 540 | 45 |
| 62.5 | 15.4 | 47.4 | 45.4 | 31.9 | 28.9 | 21.5 | 539 | 45 |
| 100 | 19.8 | 44.3 | 42.3 | 27.8 | 24.8 | 20.1 | 538 | 45 |
| 250 | 32.8 | 38.3 | 36.3 | 19.8 | 16.8 | 17.3 | 537 | 45 |
| 300 | 36.4 | 37.1 | 35.1 | 18.3 | 15.3 | 16.8 | 536 | 45 |
| 400 | 43.0 | 35.3 | 33.3 | 15.8 | 12.8 | 15.9 | 536 | 45 |
| 500 | 48.9 | 33.8 | 31.8 | 13.8 | 10.8 | 15.2 | 536 | 45 |

* Spec meets ANSI/TIA 568.2-D standard. Sweep tested to 500 MHz, all values are dB/100m (328 ft.) and values above 250 MHz are for informational purposes only.



**For more information contact
your ADI Sales person or visit
adiglobal.com/adiexclusivebrands**